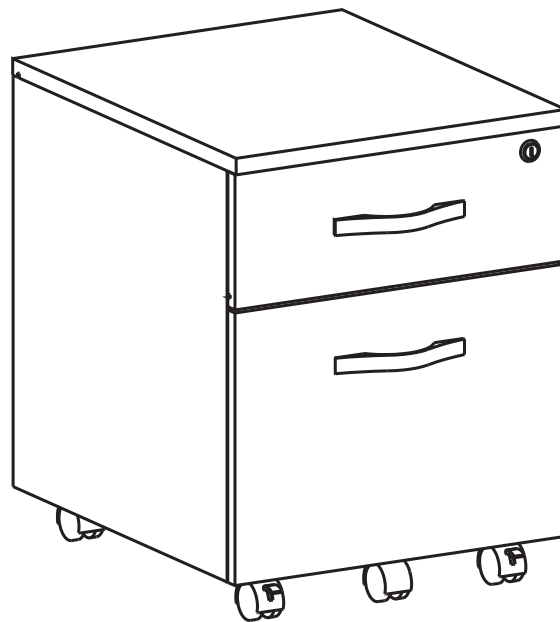


English

FILING CABINET

ASSEMBLY INSTRUCTION

Thanks for purchasing one of our products, please read carefully the assembly instructions before the installation (Attention: Do not tighten the screws before all screws are in place).



MODEL S-25

General Care:

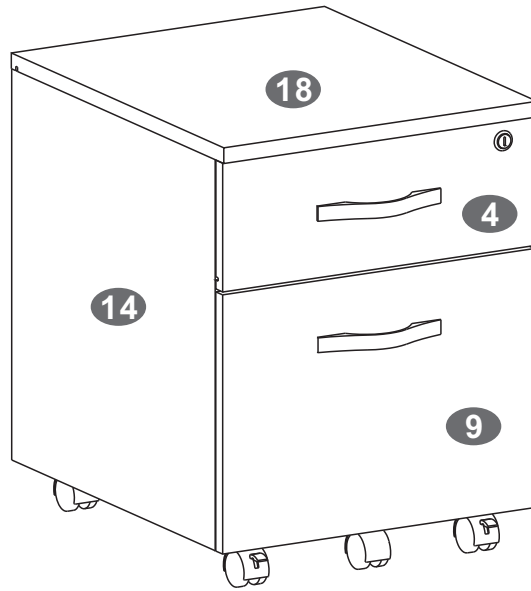
-Keep your furniture out direct sunlight-Use desk pads and coasters to protect the surface from dents,scratches,and moisture from hot or cold liquids.

Cleaning:

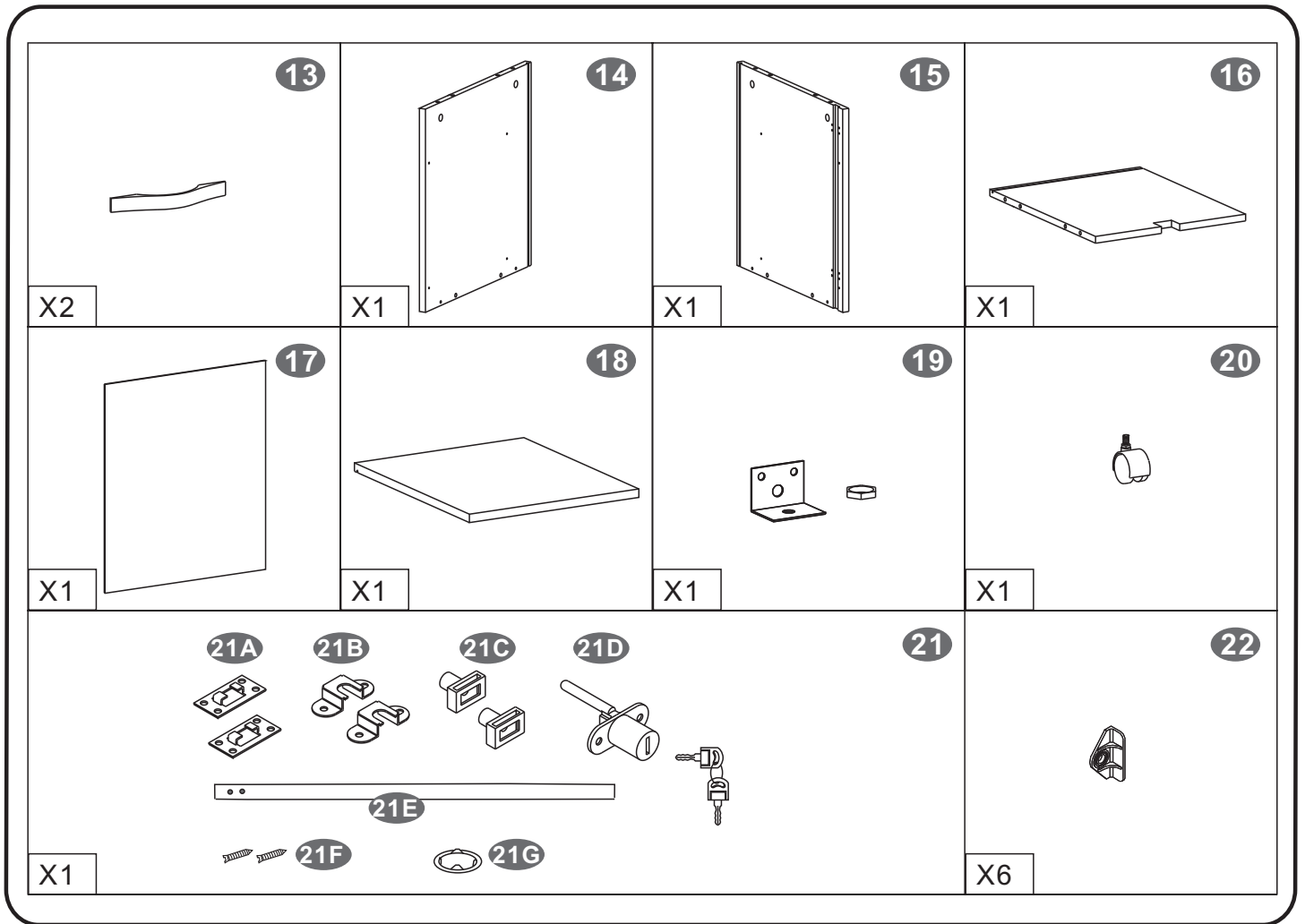
-For cleaning, wipe the surface with a damp (not wet) cloth or wipe dry with a clean lint free cotton cloth.
-Window cleaning liquid or a similar cleaning liquid can be used to clean glass surface.



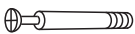
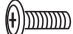

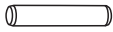


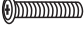



▪PARTS LIST



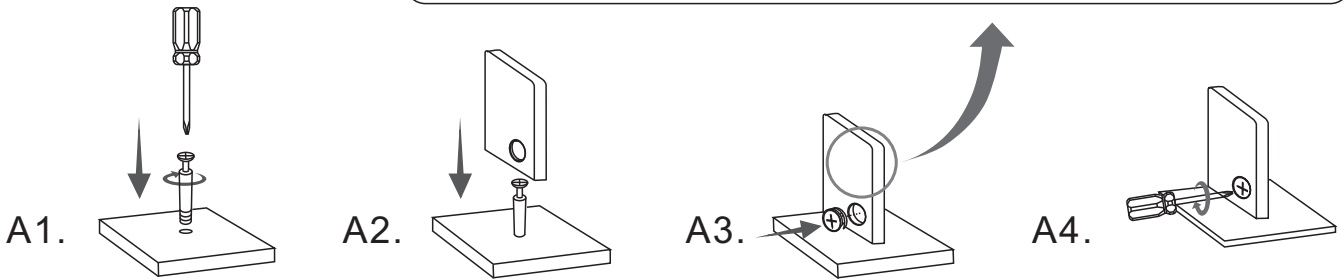
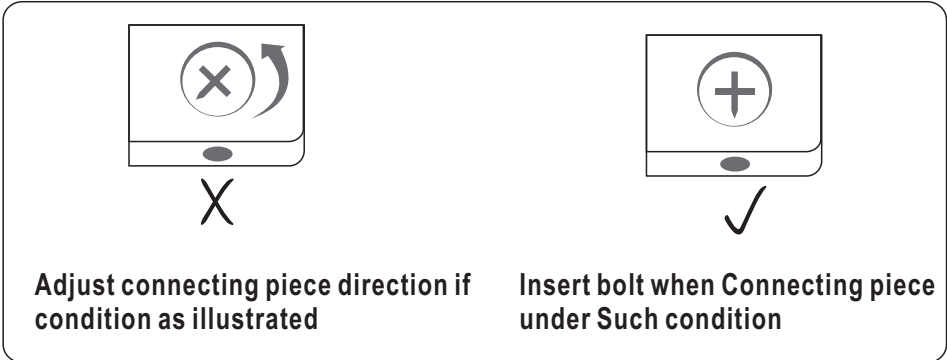
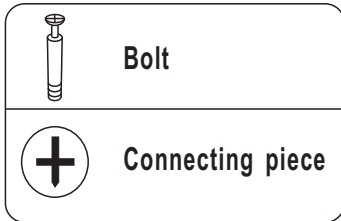
 X1	 X1	 X2	 X1
 X2	 X1	 X1	 X1
 X1	 X1	 X2	



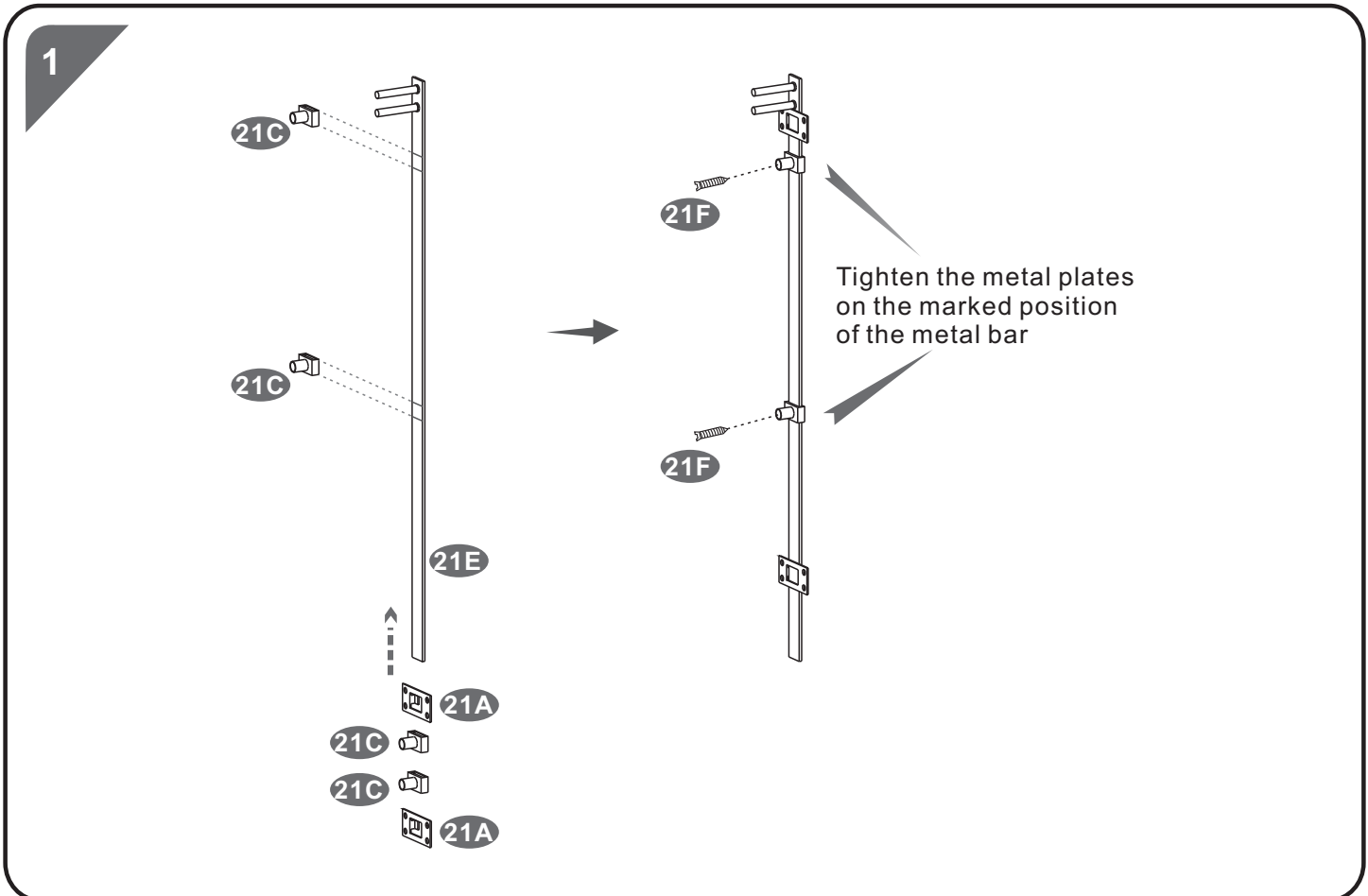
▪SCREWS LIST

PART	QTY.	ITEM		PART	QTY.	ITEM	
A	8	6X40 MM		F	7	6X12 MM	
B	8	4X35 MM		G	8	8X30 MM	
C	42	3X15 MM		H	8	Φ 15 MM	
D	4	4X20 MM			1		
E	18	4X14 MM			1		

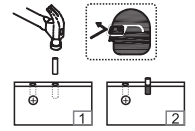
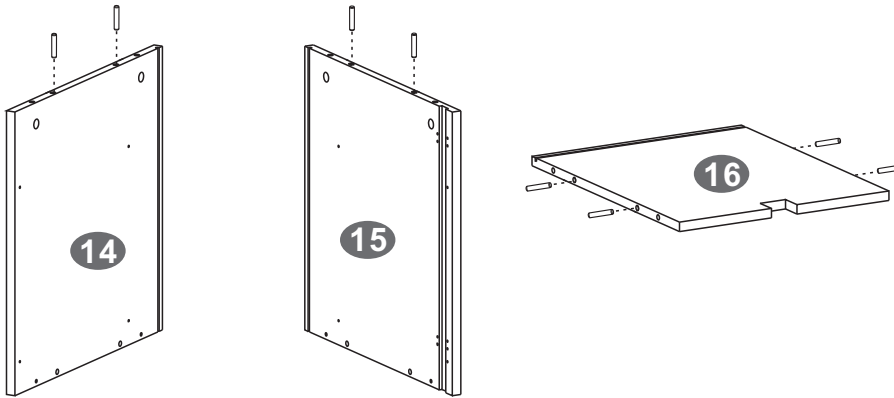
6X40MM BOLT INSTALLATION AS BELOW:



ASSEMBLY STEPS:



2

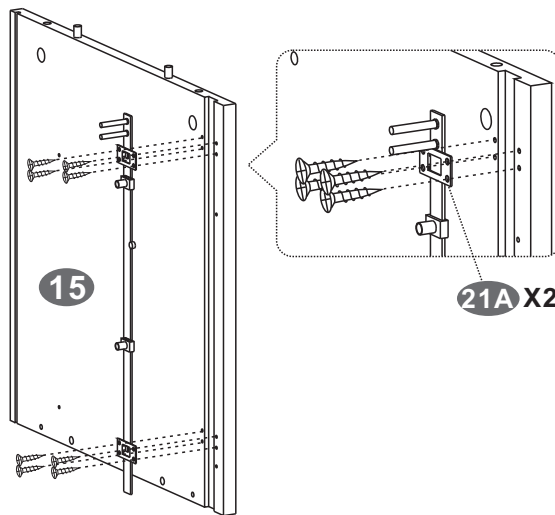


■ SCREWS

G 8X30 MM

8PCS

3



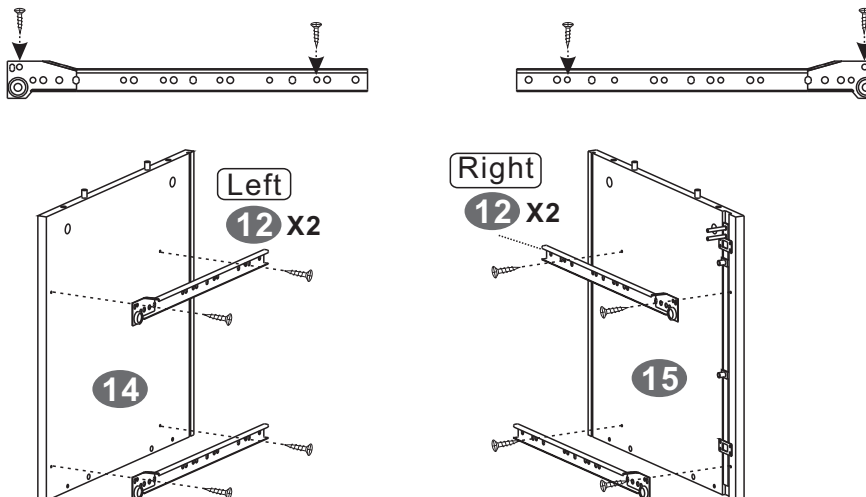
■ SCREWS

C 3X15 MM

8PCS



4



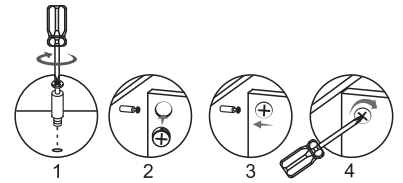
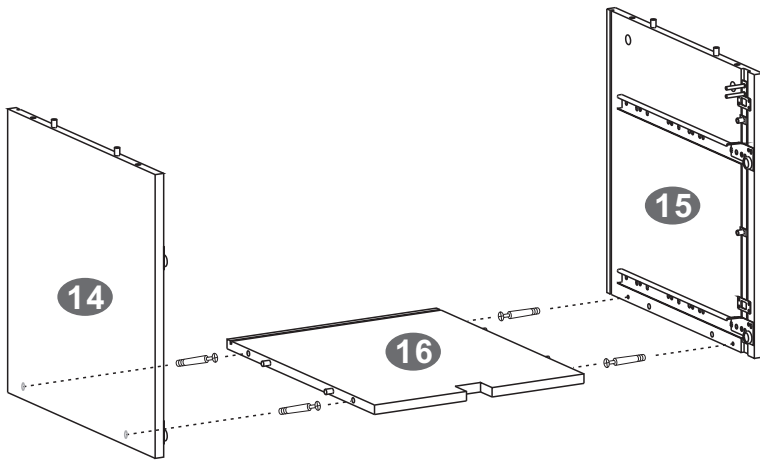
■ SCREWS

C 3X15 MM

8PCS



5



SCREWS

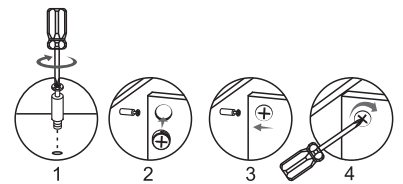
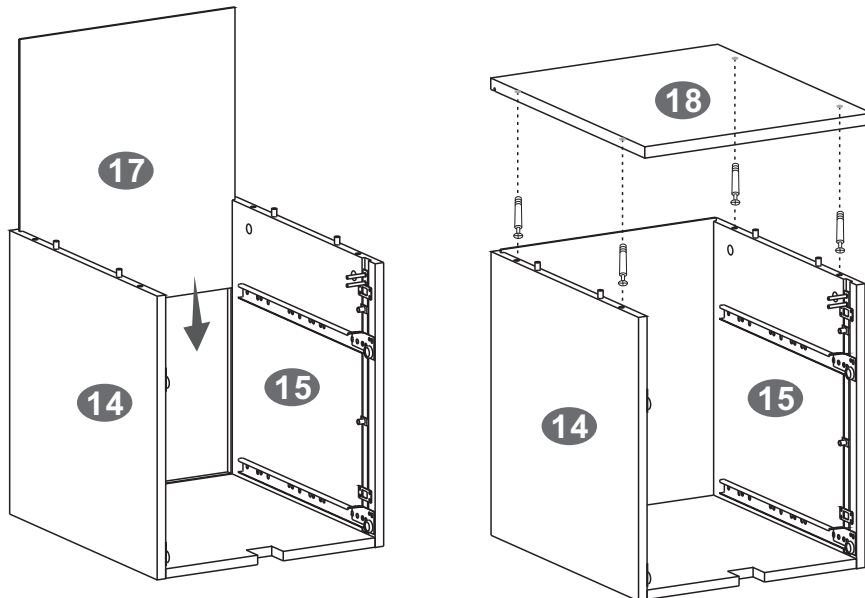
A 6X40 MM

4PCS

H Φ 15 MM

4PCS

6



SCREWS

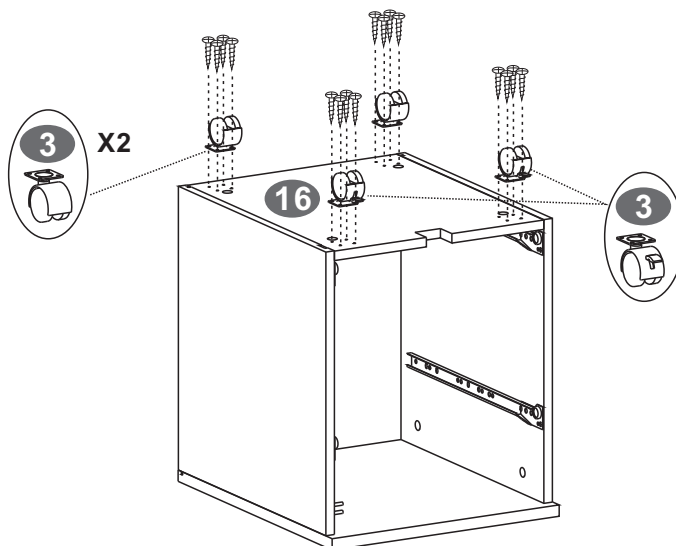
A 6X40 MM

4PCS

H Φ 15 MM

4PCS

7

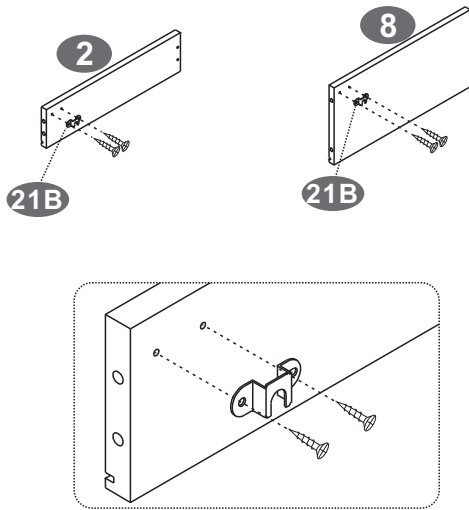


SCREWS

E 4X14 MM

16PCS

8



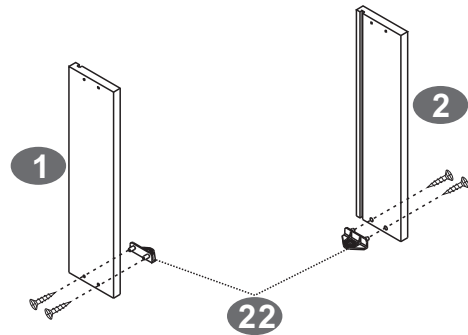
▪ SCREWS

C 3X15 MM

 4PCS



9



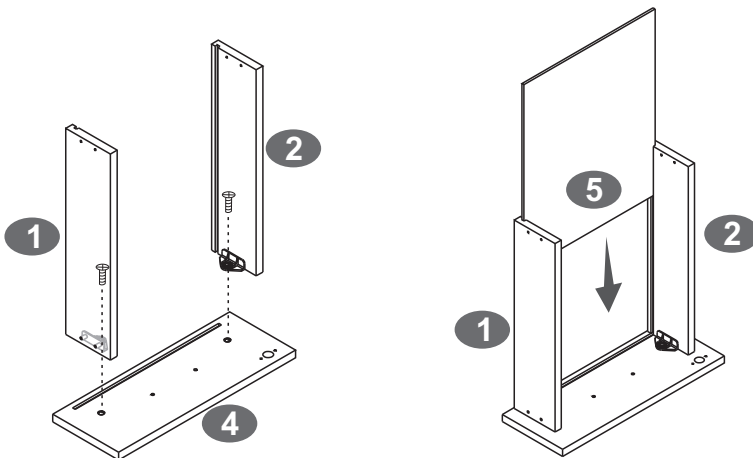
▪ SCREWS

C 3X15 MM

 4PCS



10



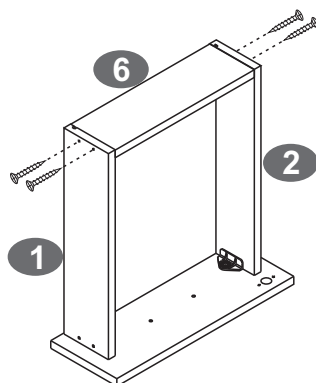
▪ SCREWS

F 6X12 MM

 2PCS

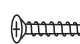


11



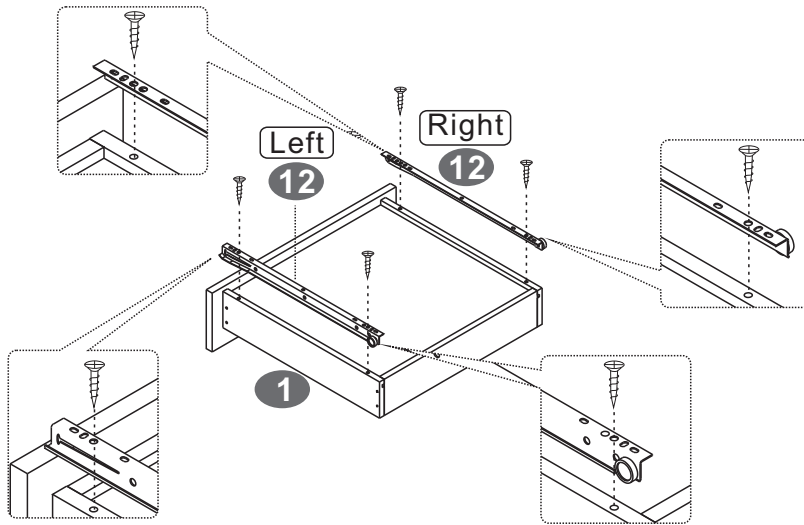
▪ SCREWS

B 4X35 MM

 4PCS



12



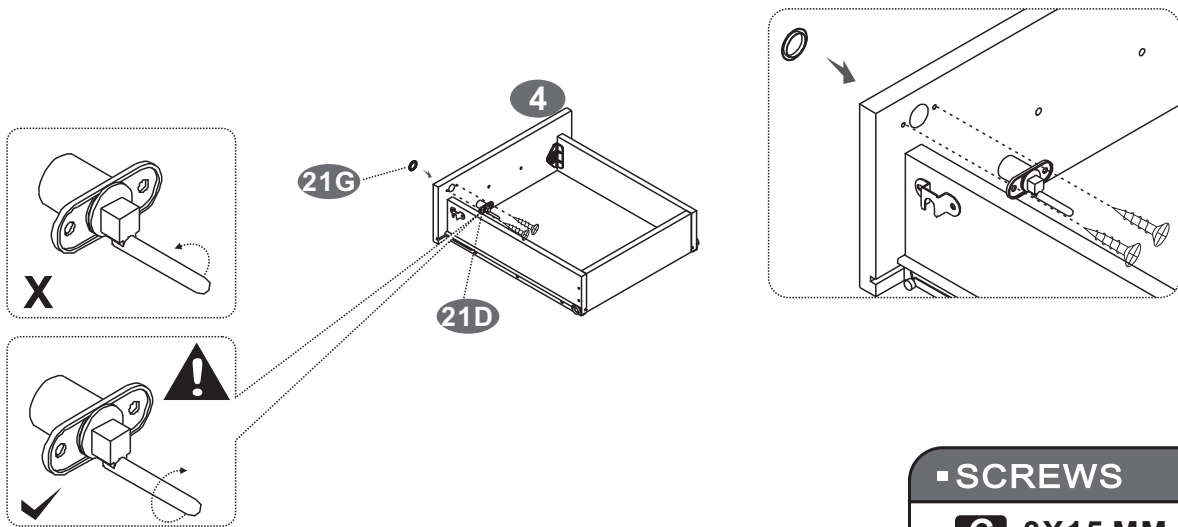
▪ SCREWS

C 3X15 MM

4PCS



13



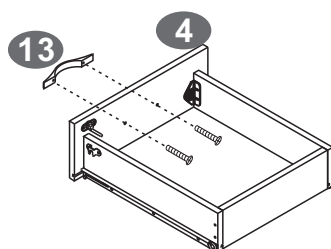
▪ SCREWS

C 3X15 MM

2PCS



14



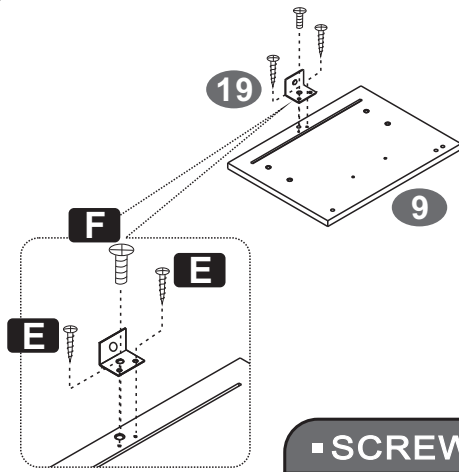
▪ SCREWS

D 4X20 MM

2PCS



15



■ SCREWS

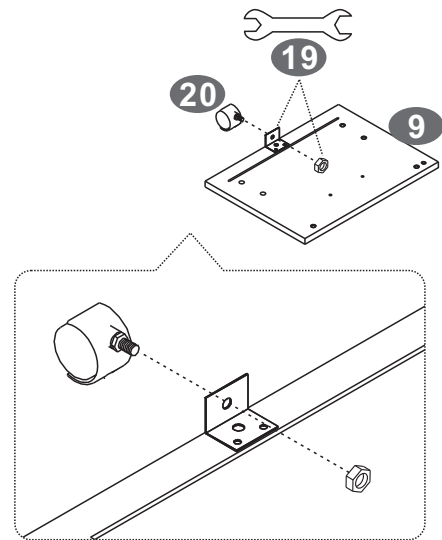
E 4X14 MM

2PCS

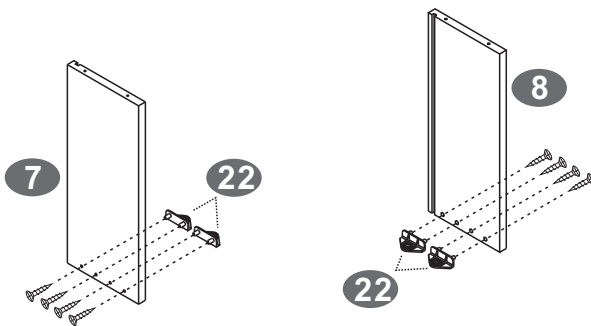
F 6X12 MM

1PC

16



17

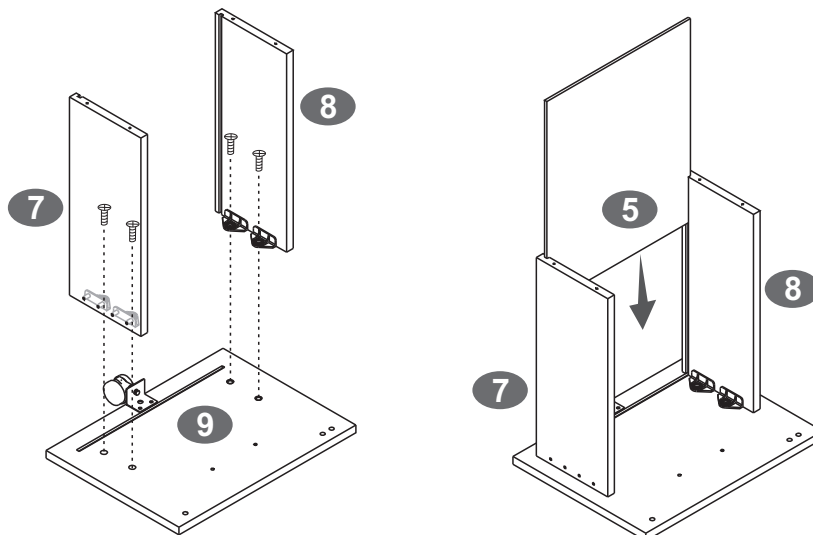


■ SCREWS

C 3X15 MM

8PCS

18

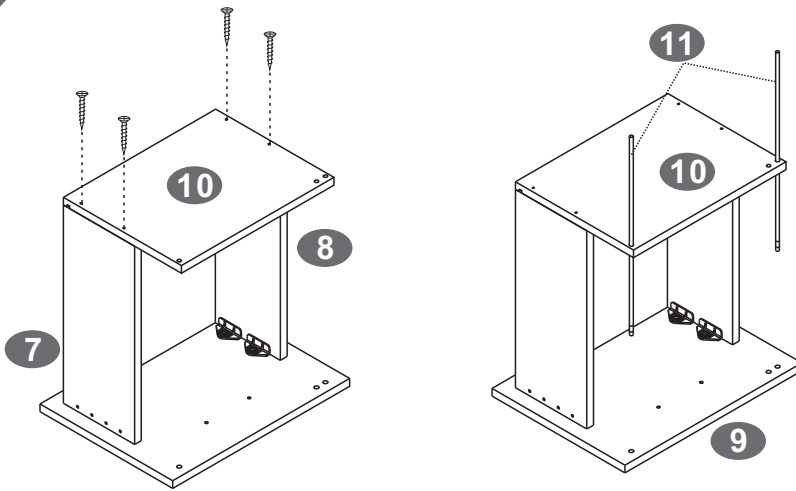


■ SCREWS

F 6X12 MM

4PCS

19



▲ Be careful not to overtighten the metal rod

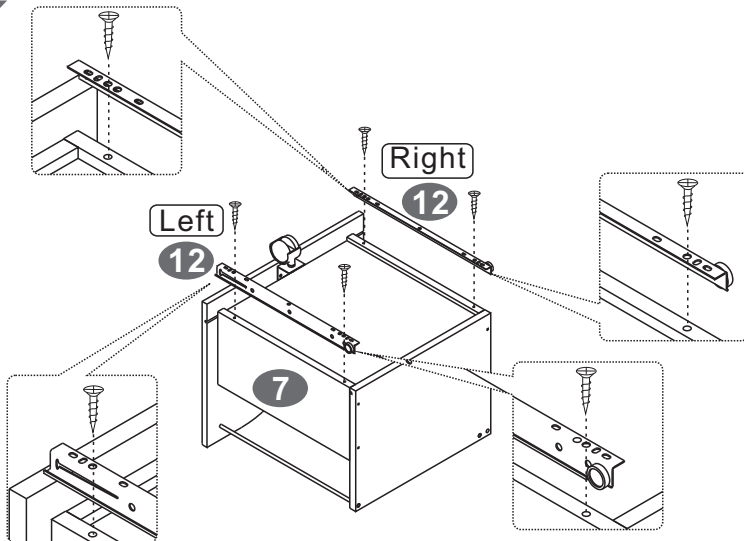
■ SCREWS

B 4X35 MM

4PCS



20



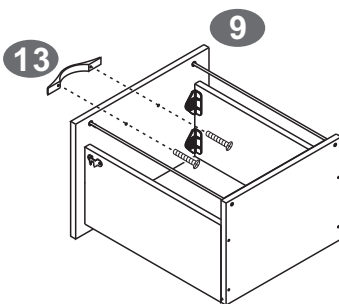
■ SCREWS

C 3X15 MM

4PCS



21



■ SCREWS

D 4X20 MM

2PCS



22

