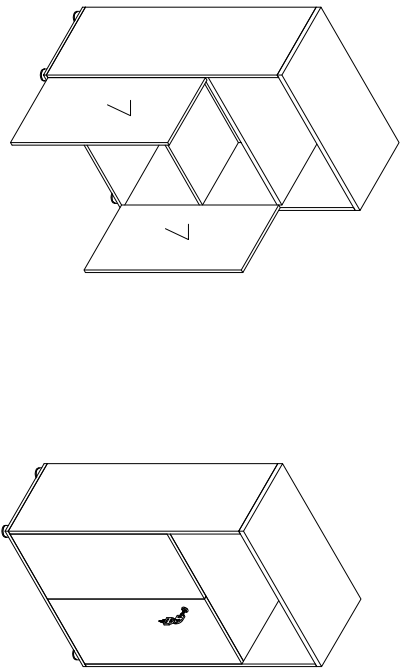
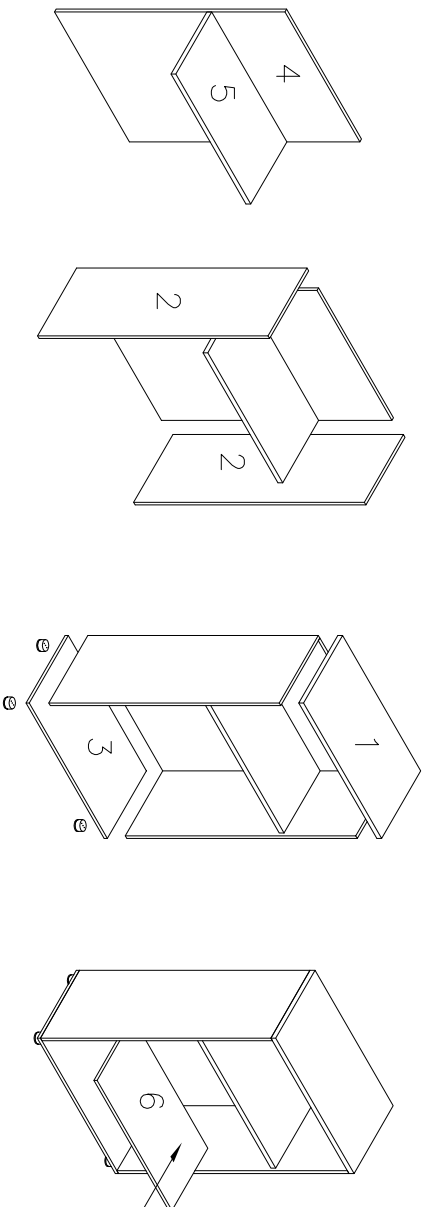
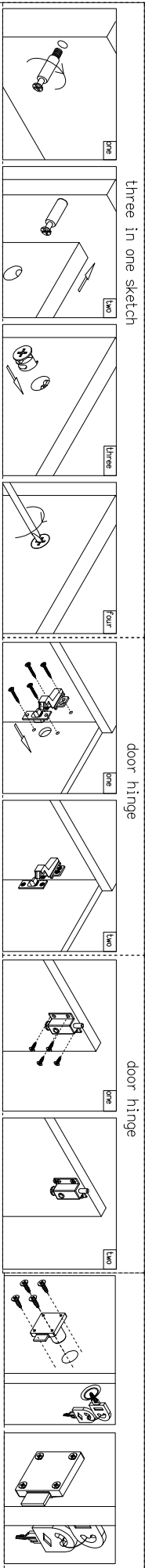




INSTALL DRAWING



| | | | |
|-----------------------|--|---|---|
| PG-F22H-A80D | | Installation tool | |
| | |  |  |
| Installs the hardware | | No. | Accessories |
| 1. 800x400x25=1 | | S1 | 4x16=28 |
| 2. 1029x398x16=2 | | S3 | x24 |
| 3. 800x400x16=1 | | S4 | x4 |
| 4. 1029x766x16=1 | | S5 | x12 |
| 5. 766x362x25=1 | | S6 | x4 |
| 6. 765x361x25=1 | | S7 | x4 |
| 7. 716x380x16=2 | | S8 | 4x20=8 |
| | | S9 | x1 |
| | | S10 | x1 |
| | | S11 | x1 |
| | | S12 | |
| | | S13 | |
| | | S14 | |
| | | S15 | |
| | | S16 | |
| | | S17 | |

Important: Follow steps in order. Requires 2 people to complete assembly